



PRSTD STD  
 US Postage  
 PAID  
 Ithaca NY  
 Permit No. 780

Volume 18 Number 9 September 2004  
 P.O. Box 669 Winthrop, WA 98862  
[www.bearcreeklumber.com](http://www.bearcreeklumber.com)

## In This Issue

Restoration Logging/Pictures  
 Industry News  
 Canada Wins One  
 Land Use Restrictions in Seattle  
 Warm Days and Cool Deals



## More Boats Built With Bear Creek

James D. Quirk says bigger is better when it comes to the cruising business. Quirk, owner of Shoreline Cruises on Lake George, NY, is upgrading his fleet of five vessels with a new mahogany and white, cedar-trimmed boat, the Adirondack, which is expected to carry more than 400 diners on lunch and dinner cruises.

To build the new vessel, Shoreline turned to Scarano, the Bethlehem-based company that built what was then its largest boat, the 85-foot-long Horicon, in 1988. "I really hadn't thought of going anywhere else," Quirk said of Scarano. "They built the Horicon for me and they've given me just terrific backup whenever I've needed things."

Scarano has built 31 vessels over the years -- a mix of wooden sailing vessels and large aluminum or steel cruising boats.

As the Adirondack takes shape at the boat yard, workers in another bay a few meters -- and 200 years -- away are building a wooden 56-foot sloop: a replica for the Michigan Maritime Museum of the Friends Good Will, a ship that served in both the British and the U.S. navies during the War of 1812.

Bear Creek Lumber has supplied Scarano ([www.scaranoboat.com](http://www.scaranoboat.com)) with the Port Orford cedar used in both of the above boats. It was custom milled in 24 ft lengths. Scarano has been pleased with the materials it has received from Bear Creek Lumber and has ordered more materials for a future boat. Thanks to Lance Nivard for supplying the links and photo for this article, and for being such a cheerful customer when he calls in!



## Mahogany Bay Builders: 1940 21' Falls Flyer Inboard

This 1940 Falls Flyer restoration was started in mid summer 2002. The boat was too far gone to restore, so we decided to use it as a pattern and are currently in the process of building three new Falls Flyer inboards from the pattern supplied by this boat. Wood supplied by Bear Creek Lumber. To see the project visit [www.mahoganybay.net/Restoration%20Services/In%20the%20shop%20now/1940\\_21Falls%20flyer.htm](http://www.mahoganybay.net/Restoration%20Services/In%20the%20shop%20now/1940_21Falls%20flyer.htm)



Above: Ten-inch hand peeled posts. Photo by Jessica Blethen

## Bannick Camp Tree Farm

### Sustainably Harvested Douglas Fir Posts and Poles

Bear Creek Lumber selectively harvests posts and poles in diameters of all sizes and lengths from its forestry operation. The trees are hand marked, cut and peeled. Pictures shown inside this newsletter are peeled 10 inch posts (above) and unpeeled 3-4 inch rails. The rails can be used as natural fencing or for furniture. One company uses them for tiki bars. The natural character of some of the rails makes for interesting natural shapes. The property suffers from areas of mistletoe (as seen in picture inside on page 2), which can be a huge fire hazard. As part of the company's restorative thinning, many mistletoed trees are being harvested including some larger 12-18 inch trees. For more information about these fir products, call 800-597-7191. Logs will be available until snow closes the roads in late October/early November.

# Restoration Logging

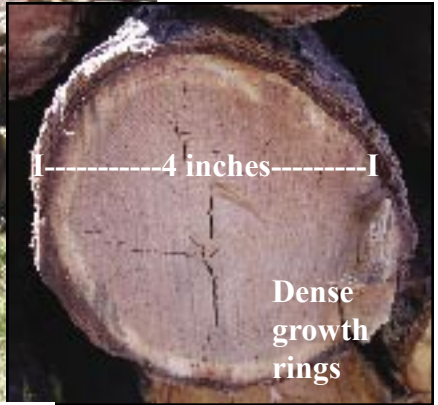
Overgrown suppressed stands of Douglas fir are logged for better forest environmental health. Trees that should be spaced 30 feet apart are typically targeted (as seen right with blue paint markings). Growth rings show the wood is particularly dense. This product is excellent for a variety of uses from rail fencing (using small diameter logs), to posts and poles for construction. Whole trees are available for sale in lengths up to 40 ft long. For more information, call (800) 597-7191 or you can email [customerservice@bearcreeklumber.com](mailto:customerservice@bearcreeklumber.com)



Local sawyer Jake Marshall spends the summer thinning, when not fighting forest fires



Trees marked for thinning



-----4 inches-----

Dense growth rings

## Unpeeled Fir or Pine Poles

- 3 inch diameter \$2 LF
- 4 inch diameter \$3.50 LF
- 5 inch diameter \$4 LF.
- 6 inch diameter \$6 LF
- 7 inch diameter \$7 LF
- 8 inch diameter \$8 LF
- 9 inch diameter \$9 LF
- 10 inch diameter \$10 LF
- 11 inch diameter \$11 LF
- 12 inch diameter \$12 LF

**Discounts available on quantities!**



### Rail fencing

Young fir trees grow like weeds when exposed to sunlight after logging. Rail fencing separates the forest from a pathway that meanders back to a campsite in the woods.



Above: Mistletoe attaches itself to the bark of a tree and grows "brooms" which don't kill the tree but sap its strength, spread to other trees and creates a huge fire danger. Mistletoe is species specific. This is an example of Douglas fir mistletoe. Most logging of larger trees on this property is focused on eliminating mistletoe from the stand.

# Industry News

**Sales of existing homes hit an all-time high in June** as rising mortgage rates triggered a rush by fence-sitters to close deals before rates went higher.

The June increase, which was the fifth consecutive gain, pushed the annual rate of existing home sales to 6.95 million units, beating the old record set in May of 6.81 million units, the National Association of Realtors reported. Every region of the country either set or tied its record for sales activity.

**A new ten-year forecast on housing and home finance** predicts that demand for housing will result in the construction of 2 million new homes annually in the U.S. through 2013—exceeding the production rates of the 1980s and 1990s. The foundation for America's housing industry appears remarkably strong despite an expected rise in interest rates, according to five top housing economists who collaborated on the study. Their conclusions were reinforced by a combination of projected population and immigration growth and a national home ownership rate expected to exceed 70 percent over the coming decade. "America's Housing Forecast," which also examined the long-term outlook for home prices and mortgage funding, was released in late May by the Homeownership Alliance, an association of 18 national housing-related organizations.

Residents of King County, WA will only be able to build on 10 percent of their land, according to a new law being considered by the county government, which, if enacted, will be the most restrictive land use law in the nation.

Known as the 65-10 Rule, it calls for landowners to set aside 65 percent of their property and keep it in its natural, vegetative state. According to the rule, nothing can be built on this land, and if a tree is cut down, for example, it must be replanted. Building anything is out of the question.

Most of the residents who will be directly affected by the regulations — those who own property in the rural areas of the country — are fuming. They see the new regulations as a land grab, and a violation of their property rights.

"My take is it's stealing — out and out stealing," said county resident Marshall Brenden. "They're taking 65 percent of your land that you fought for years to pay for, paid mortgages on, and now you can't use it."

But supporters and environmentalists say personal property rights do not trump the rights of a larger community to save the eco-system. "We're trying to keep the rural area a place that isn't just McMansions and ball courts, but instead has those natural processes," said Tim Trohimovich of the group 1000

Friends of Washington, which aims to promote healthy communities and cities while protecting farmland and forests.

## Canada Wins A Round In Tariff War



**The bucks stop here, on an early summer morning.** Photographer Melissa Hughes counted eight of them hanging out in our lumberyard when she arrived for work one day. They moved on as she took their picture. Shoppers!

through panels set up by the North American Free Trade Agreement (NAFTA). A series of rulings by those panels forced the U.S. to recalculate its duties.

The lower rates followed a change in methodology used by Commerce. It previously had compared timber prices between the U.S. and Canada, an approach that was ruled illegal by a NAFTA panel.

"For the first time in the lumber cases, we used domestic Canadian timber prices as a benchmark," James Jochum, the assistant secretary of commerce for import administration, said in an interview.

Canadian producers say they still hope that the accumulation of NAFTA and WTO rulings will lead to the end of the duties altogether.

It is widely expected that the end of tariffs will lower the overall cost of lumber for builders in the United States. The Canadian position has been supported by the American National Association of Home Builders.

## Greater Seattle Area Faces Unusually Severe Land Use Restrictions



**Bear Creek Lumber**  
**TIMBERLINE**  
P.O. Box 669 Winthrop, WA 98862  
www.bearcreeklumber.com  
(800) 597-7191 fax (509) 997-2040  
Sage Bannick, Feature writer Ela Bannick, Editor